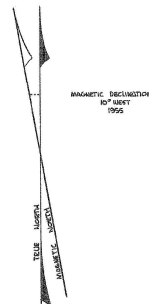


KEY MAP

REVISIONS		
DATE	L.S. NAME	LSNR
3/5/87	ROBERT C. BOGART	15474
JAN 1, 1988	ROBERT C. BOGART	15474
4/1/88	ROBERT C. BOGART	15474
7/1/89	ROBERT C. BOGART	15474
7/1/89	ROBERT C. BOGART	15474
10/1/89	ROBERT C. BOGART	15474
1/1/90	ROBERT C. BOGART	15474
FEB., 1997	ERROL MELNICK	34013
APRIL, 1998	ERROL MELNICK	34013
DEC. 2012	CARL M. HERRMAN, PLS	42271



THE AREAS, BOUNDARIES AND DIMENSIONS SHOWN ON THIS TAX MAP ARE DERIVED FROM GROUND SURVEYS, AERIAL SERVICE, AND RECORDED PLANS, MADE DEEPLY, MILS, AND ARE TO BE USED FOR ASSESSMENT PURPOSES ONLY.

I HEREBY CERTIFY THAT THIS MAP AND ANY REQUIRED SURVEY HAS BEEN MADE UNDER MY IMMEDIATE SUPERVISION, AND COMPLIES WITH THE LAWS OF THE STATE OF NEW JERSEY.  
 3-30-87 Robert C. Bogart PLS  
 DATE, ROBERT C. BOGART / P.E., L.S. 15474  
 ROBERT C. BOGART AND ASSOCIATES  
 ROUTE 11 & EMERY AVE.  
 FLEMINGTON, NEW JERSEY

VAN CLEEF ENGINEERING ASSOCIATES  
 1129 RT. 51, LEBANON, NEW JERSEY  
 REVISED: JAN 20, 1982 / NOV. 23, 1982

HERITAGE CONSULTING ENGINEERS  
 1575 BROAD ST, FLEMINGTON, NEW JERSEY  
 REVISED: DEC. 1, 1982, JAN. 1, 1984, JAN. 1, 1985, JAN. 1, 1986, DEC. 1, 1988

TAX MAP

BORO OF MILFORD  
 HUNTERDON COUNTY, NEW JERSEY  
 SCALE 1"=400' NOVEMBER 1968  
 AS REVISED BY

BOHREN BOGART & VAN CLEEF  
 ENGINEERS ASSOCIATES, INC.  
 72 CHURCH ST.  
 FLEMINGTON, N.J. DANIEL GROSSO  
 BELLE MEAD, N.J.

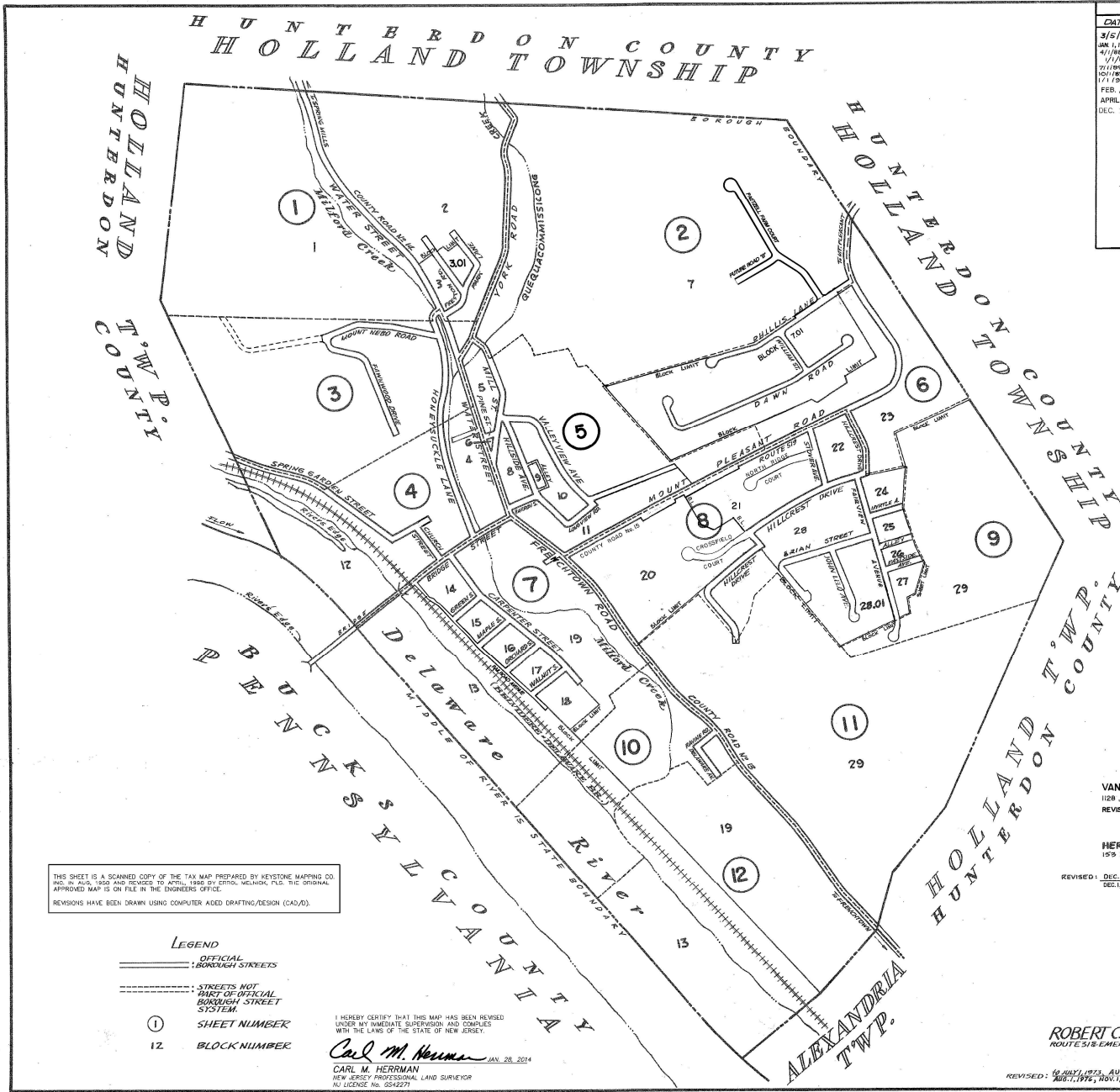
ROBERT C. BOGART & ASSOCIATES  
 ROUTE 51 & EMERY AVE., FLEMINGTON, NEW JERSEY

REVISED TO DEC 12, 1989  
 REVISED TO 8/23/1992  
 REVISED TO JULY 1, 1975

REVISED: 6/JULY/1973, AUG. 1, 1974, MAY 1, 1975, NOV. 1, 1975, AUG. 1, 1976, NOV. 1, 1978, JAN. 1, 1983

TO SHOW CONDITIONS OF DEC. 1912  
 TO SHOW CONDITIONS AS OF 4/1/87

KEY MAP



THIS SHEET IS A SCANNED COPY OF THE TAX MAP PREPARED BY KEYSTONE MAPPING CO. INC. IN AUG. 1980 AND REVISED TO APRIL 1988 BY ERROL MELNICK, PLS. THE ORIGINAL APPROVED MAP IS ON FILE IN THE ENGINEERS OFFICE.  
 REVISIONS HAVE BEEN DRAWN USING COMPUTER AIDED DRAFTING/DESIGN (CAD/D).

- LEGEND
- OFFICIAL BOROUGHS STREETS
  - STREETS NOT PART OF OFFICIAL BOROUGHS STREET SYSTEM
  - ① SHEET NUMBER
  - 12 BLOCK NUMBER

I HEREBY CERTIFY THAT THIS MAP HAS BEEN REVISED UNDER MY IMMEDIATE SUPERVISION AND COMPLIES WITH THE LAWS OF THE STATE OF NEW JERSEY.  
 Carl M. Herrman  
 CARL M. HERRMAN  
 NEW JERSEY PROFESSIONAL LAND SURVEYOR  
 NO LICENSE No. 6542271

APRIL, 1998 ERROL MELNCK, P.L.S. N.J. #34013  
 DEC. 2012 CARL M. HERRMAN, P.L.S. N.J. #12271

**VAN CLEEF ENGINEERING ASSOCIATES**  
 1128 RT. 31, LEBANON, NEW JERSEY  
 REVISED: JAN 20, 1998

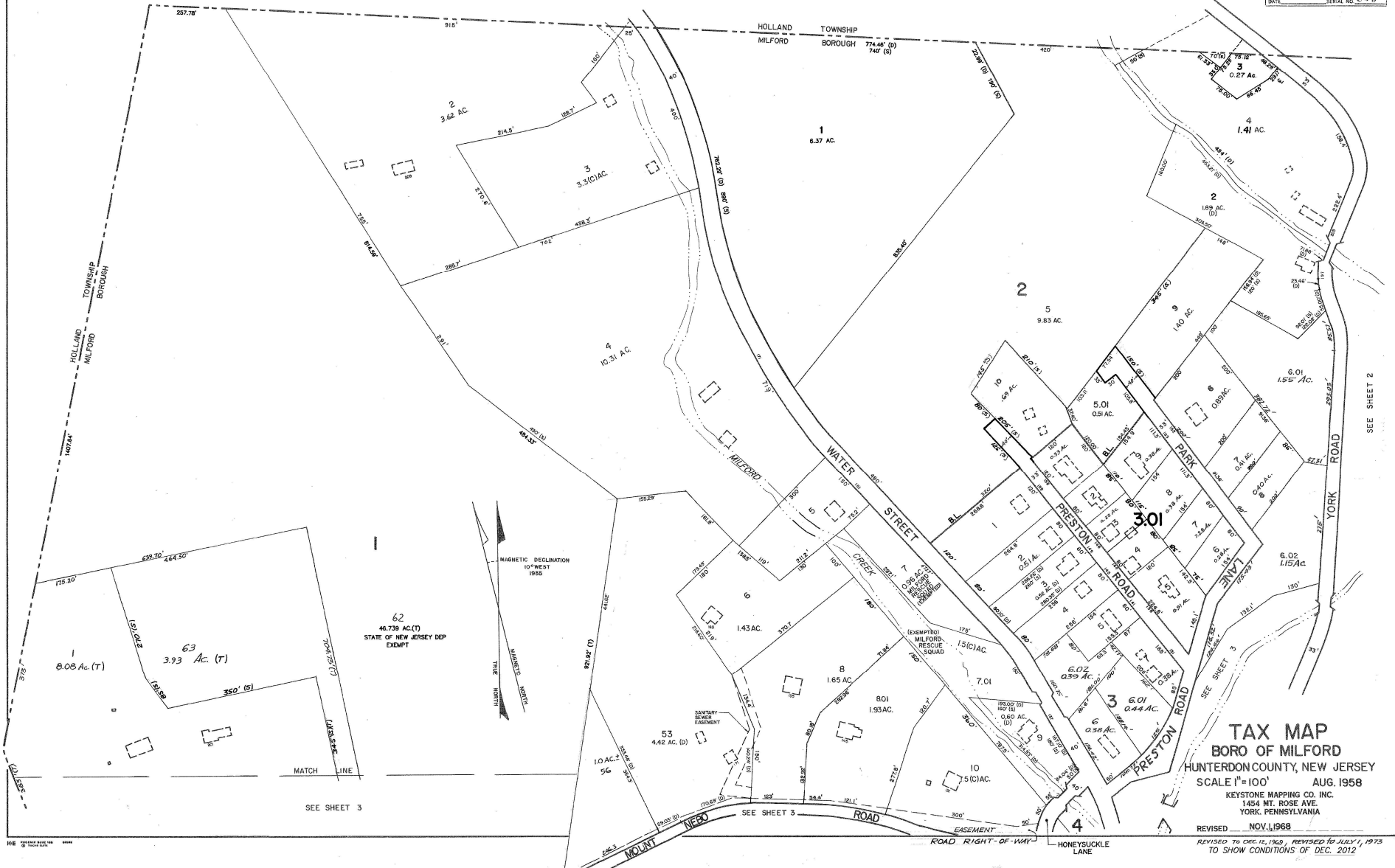
**HERITAGE CONSULTING ENGINEERS**  
 153 BRAD ST, FLEMINGTON, NEW JERSEY  
 REVISED: DEC 1, 1982, JAN 1, 1984, JAN 1, 1985, JAN 1, 1986 &  
 DEC 1, 1986

**ROBERT C. BOGART & ASSOCIATES**  
 ROUTE 318 EMERY AVE, FLEMINGTON, NEW JERSEY

REVISED: 10 JULY 1973, AUG 1, 1974, MAY 1, 1975, NOV 1, 1975  
 AUG 1, 1976, NOV 1, 1978, JAN 1, 1981, JAN 1, 1988

THIS SHEET IS A SCANNED COPY OF THE TAX MAP PREPARED BY KEYSTONE MAPPING CO. INC. IN AUG. 1988 AND REVISED TO APRIL, 1998 BY ERROL MELNCK, P.L.S. THE ORIGINAL APPROVED MAP IS ON FILE IN THE ENGINEERS OFFICE.  
 REVISIONS HAVE BEEN DRAWN USING COMPUTER AIDED DRAFTING/DESIGN (CAD/D).

NEW JERSEY DEPARTMENT OF THE TREASURY  
 APPROVED AS A TAX MAP PURSUANT TO THE PROVISIONS OF CHAPTER 123 LAWS OF 1913  
 BY: *C. HERRMAN* STATE COMMISSIONER  
 SEP 26 1988 SERIAL NO. 209  
 DATE



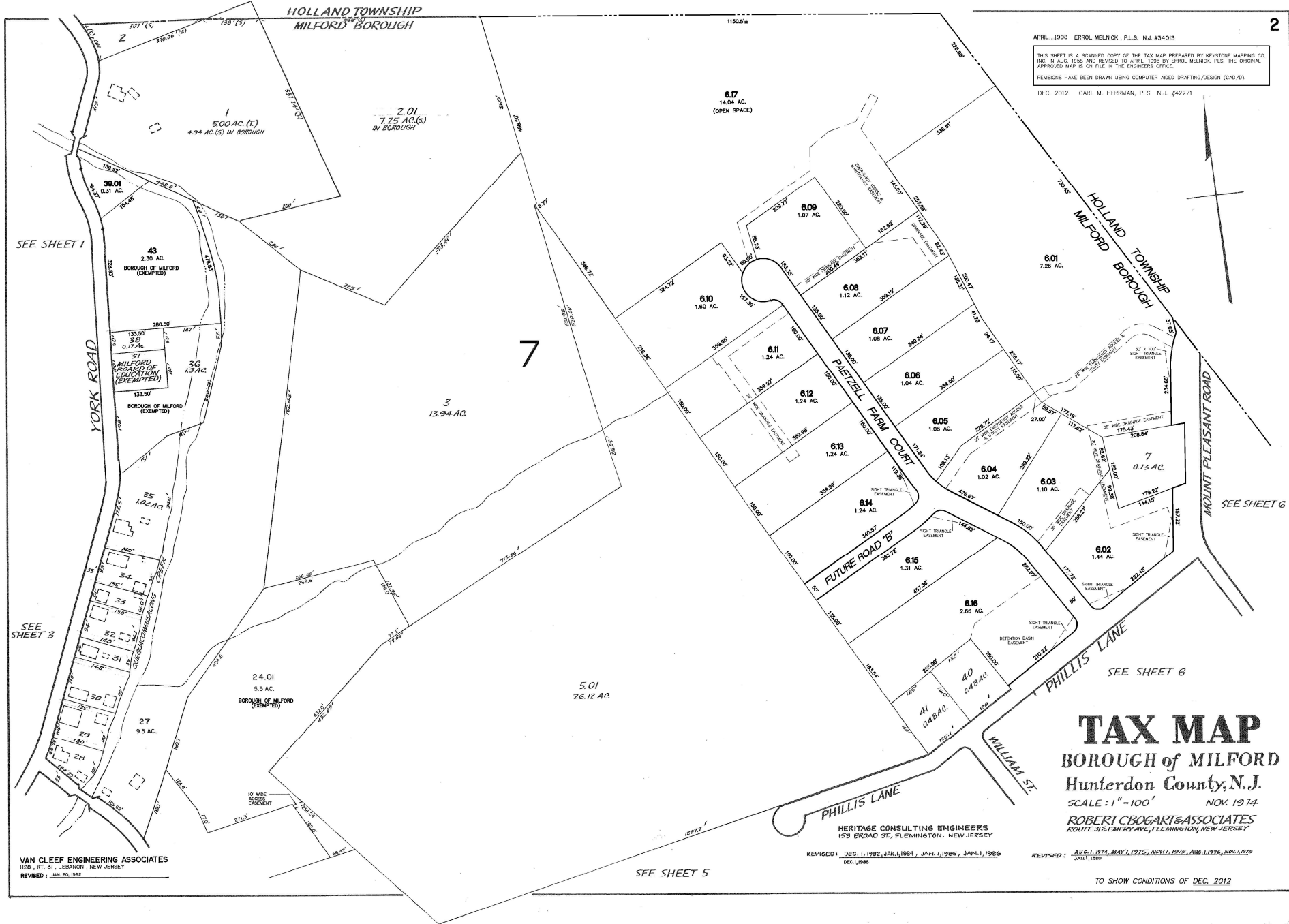
**TAX MAP**  
 BORO OF MILFORD  
 HUNTERDON COUNTY, NEW JERSEY  
 SCALE 1"=100' AUG. 1958  
 KEYSTONE MAPPING CO. INC.  
 1484 MT. ROSE AVE  
 YORK, PENNSYLVANIA  
 REVISED NOV. 1, 1968  
 REVISED TO DEC. 1, 1960, REVISED TO JULY 1, 1975  
 TO SHOW CONDITIONS OF DEC. 2012

APRIL, 1998 ERROL MELNICK, P.L.S. No. #34013

THIS SHEET IS A SCANNED COPY OF THE TAX MAP PREPARED BY KEYSTONE MAPPING CO. INC. IN AUG. 1988 AND REVISED TO APRIL, 1998 BY ERROL MELNICK, P.L.S. THE ORIGINAL APPROVED MAP IS ON FILE IN THE ENGINEERS OFFICE.

REVISIONS HAVE BEEN DRAWN USING COMPUTER AIDED DRAFTING/DESIGN (CAD/D).

DEC. 2012 CARL M. HERRMAN, P.L.S. N.J. #42271



SEE SHEET 1

SEE SHEET 3

SEE SHEET 6

SEE SHEET 6

SEE SHEET 5

VAN CLEEF ENGINEERING ASSOCIATES  
 1128, RT. 31, LEBANON, NEW JERSEY  
 REVISED: JUN 80, 1992

HERITAGE CONSULTING ENGINEERS  
 153 BROAD ST, FLEMINGTON, NEW JERSEY  
 REVISED: DEC. 1, 1982, JAN. 1, 1984, JAN. 1, 1985, JAN. 1, 1986  
 DEC. 1, 1986

REVISED: AUG. 1, 1974, MAY 1, 1975, NOV. 1, 1975, AUG. 1, 1976, NOV. 1, 1979  
 JAN. 1, 1980

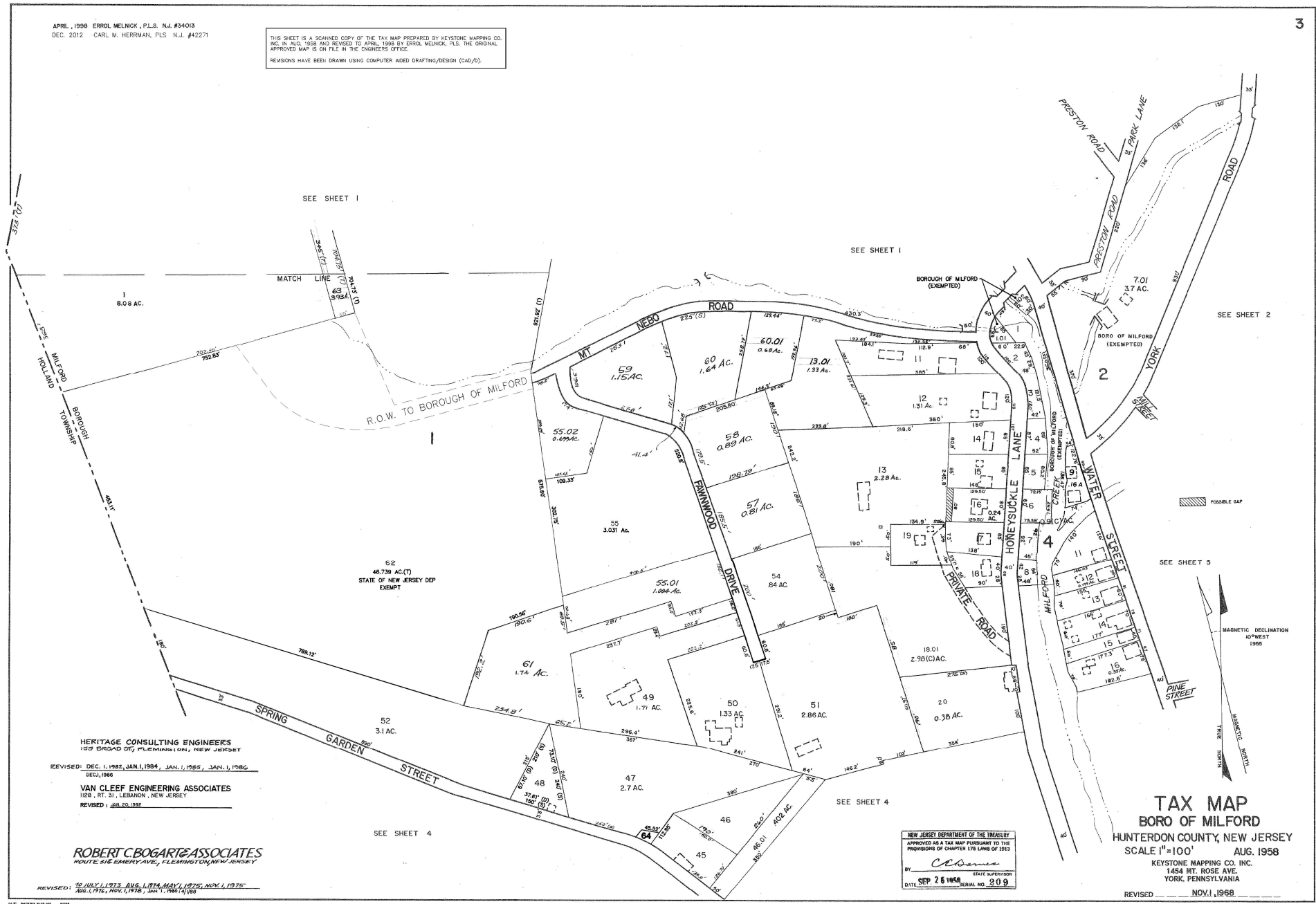
**TAX MAP**  
 BOROUGH of MILFORD  
 Hunterdon County, N.J.  
 SCALE: 1" = 100' NOV. 1974

ROBERT CBOGART & ASSOCIATES  
 ROUTE 91 & EMERY AVE, FLEMINGTON, NEW JERSEY

TO SHOW CONDITIONS OF DEC. 2012

APRIL, 1998 ERROL MELNICK, P.L.S. N.J. #34013  
 DEC. 2012 CARL M. HERRMAN, PLS N.J. #42271

THIS SHEET IS A SCANNED COPY OF THE TAX MAP PREPARED BY KEYSTONE MAPPING CO.  
 INC. IN AUG. 1998 AND REVISED TO APRIL, 1998 BY ERROL MELNICK, P.L.S. THE ORIGINAL  
 APPROVED MAP IS ON FILE IN THE ENGINEERS OFFICE.  
 REVISIONS HAVE BEEN DRAWN USING COMPUTER AIDED DRAFTING/DESIGN (CAD/D).



HERITAGE CONSULTING ENGINEERS  
 1525 BROADWAY, FLEMINGTON, NEW JERSEY  
 REVISED: DEC. 1, 1982, JAN. 1, 1984, JAN. 1, 1985, JAN. 1, 1986  
 DEC. 1, 1986  
 VAN CLEEF ENGINEERING ASSOCIATES  
 1029 RT. 51, LEBANON, NEW JERSEY  
 REVISED: JAN. 10, 1992

ROBERT C. BOGARTE ASSOCIATES  
 ROUTE 516 EMERY AVE., FLEMINGTON, NEW JERSEY

REVISED: 12 JULY 1973, AUG. 1, 1974, MAY 1, 1975, NOV. 1, 1975  
 AUG. 1, 1976, NOV. 1, 1978, JAN. 1, 1980, 1983

NEW JERSEY DEPARTMENT OF THE TREASURY  
 APPROVED AS A TAX MAP PURSUANT TO THE  
 PROVISIONS OF CHAPTER 178 LAWS OF 1933  
 BY: *Carl M. Herrman* STATE SUPERVISOR  
 DATE: SEP 26 1998 SERIAL NO. 209

TAX MAP  
 BORO OF MILFORD  
 HUNTERDON COUNTY, NEW JERSEY  
 SCALE 1"=100' AUG. 1958

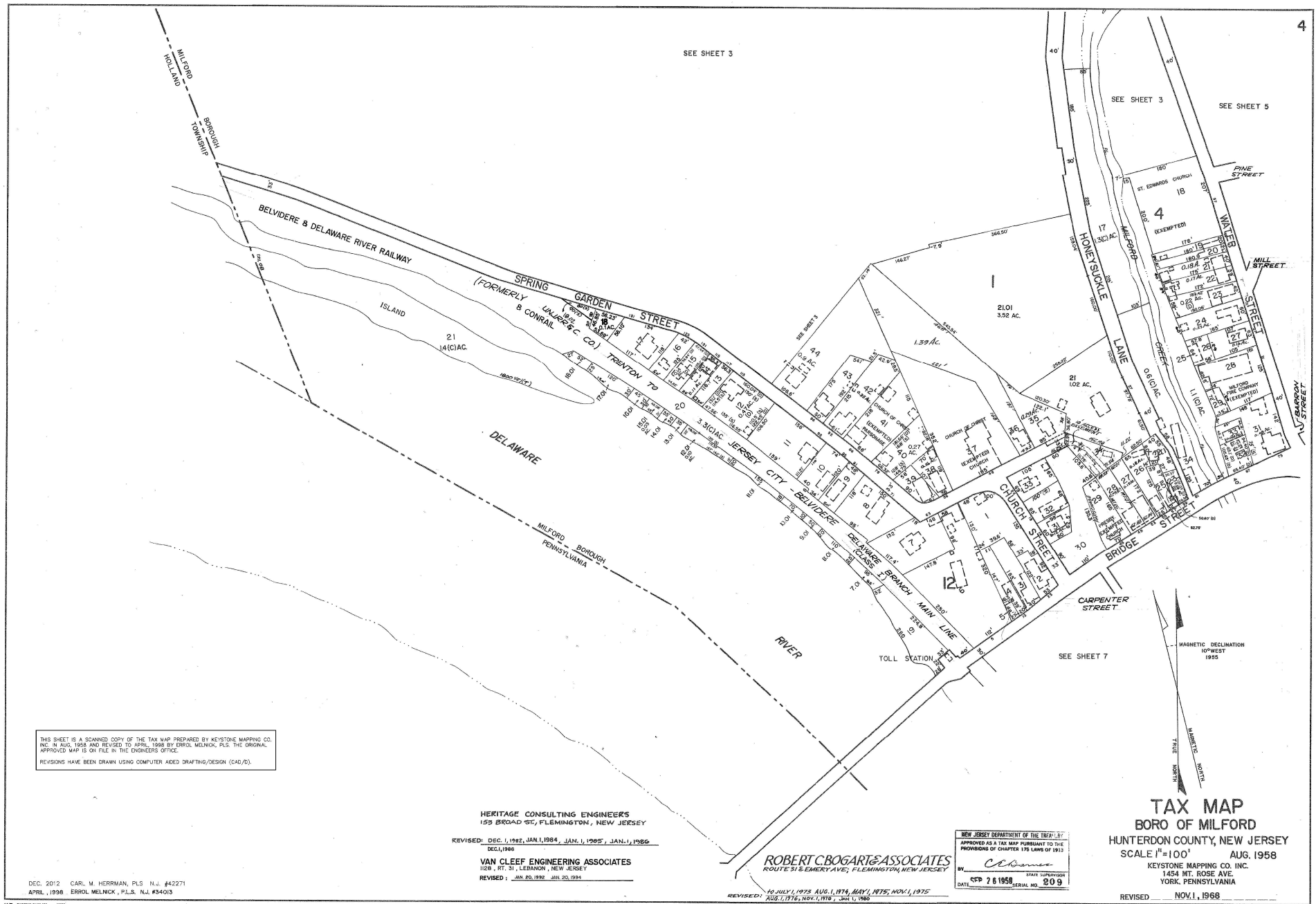
KEYSTONE MAPPING CO., INC.  
 1454 MT. ROSE AVE.  
 YORK, PENNSYLVANIA  
 REVISED: NOV. 1, 1968

REVISED TO DEC. 16, 1963, REVISED TO JULY 1, 1973  
 TO SHOW CONDITIONS OF DEC. 2012

SEE SHEET 3

SEE SHEET 3

SEE SHEET 5



THIS SHEET IS A SCANNED COPY OF THE TAX MAP PREPARED BY KEYSTONE MAPPING CO. INC. IN AUG. 1958 AND REVISED TO APRIL, 1999 BY ERROL MELNICK, P.L.S. THE ORIGINAL APPROVED MAP IS ON FILE IN THE CLERK'S OFFICE.  
 REVISIONS HAVE BEEN DRAWN USING COMPUTER AIDED DRAFTING/DESIGN (CAD/D).

HERITAGE CONSULTING ENGINEERS  
 155 BROAD ST, FLEMINGTON, NEW JERSEY

REVISED: DEC. 1, 1982; JAN. 1, 1984; JAN. 1, 1985; JAN. 1, 1986  
 DEC. 1, 1988

VAN CLEEF ENGINEERING ASSOCIATES  
 1128 R. T. 31, LEBANON, NEW JERSEY

REVISED: JAN. 20, 1992; JAN. 20, 1994

ROBERT C. BOGART & ASSOCIATES  
 ROUTE 51 & EMERY AVE., FLEMINGTON, NEW JERSEY

NEW JERSEY DEPARTMENT OF THE TREASURY  
 APPROVED AS A TAX MAP PURSUANT TO THE  
 PROVISIONS OF CHAPTER 178 LAWS OF 1913  
 BY: *Robert C. Bogart*  
 DATE: 2 6 1998 STATE SUPERVISOR: 809

TAX MAP  
 BORO OF MILFORD  
 HUNTERDON COUNTY, NEW JERSEY  
 SCALE 1"=100' AUG. 1958

KEYSTONE MAPPING CO. INC.  
 1454 MT. ROSE AVE.  
 YORK, PENNSYLVANIA

REVISED: NOV. 1, 1968

REVISED TO DEC. 12, 1969; REVISED TO JULY 1, 1973  
 TO SHOW CONDITIONS OF DEC. 2012

DEC. 2012 CARL M. HERRMAN, P.L.S. N.J. #42271  
 APRIL, 1998 ERROL MELNICK, P.L.S. N.J. #54013

REVISED: 30 JULY, 1975; AUG. 1, 1976; MAY 1, 1978; NOV. 1, 1975  
 AUG. 1, 1976; NOV. 1, 1978; JAN. 1, 1980

SEE SHEET 3

SEE SHEET 2

SEE SHEET 2

SEE SHEET 6

SEE SHEET 4

SEE SHEET 7

SEE SHEET 8

DEC. 2012 CARL M. HERRMAN, P.L.S. N.J. #42271  
 APRIL, 1998 ERROL MELNICK, P.L.S. N.J. #34013  
**VAN CLEEF ENGINEERING ASSOCIATES**  
 1029 RT. 37, LEBANON, NEW JERSEY  
 REVISED: JAN. 03, 1992

**HERITAGE CONSULTING ENGINEERS**  
 159 BROAD ST., FLEMINGTON, NEW JERSEY  
 REVISED: DEC. 1, 1982, JAN. 1, 1984, JAN. 1, 1985, JAN. 1, 1986  
 DEC. 1, 1988

**ROBERT C. BOGART & ASSOCIATES**  
 ROUTE 31 & EMERY AVE., FLEMINGTON, NEW JERSEY

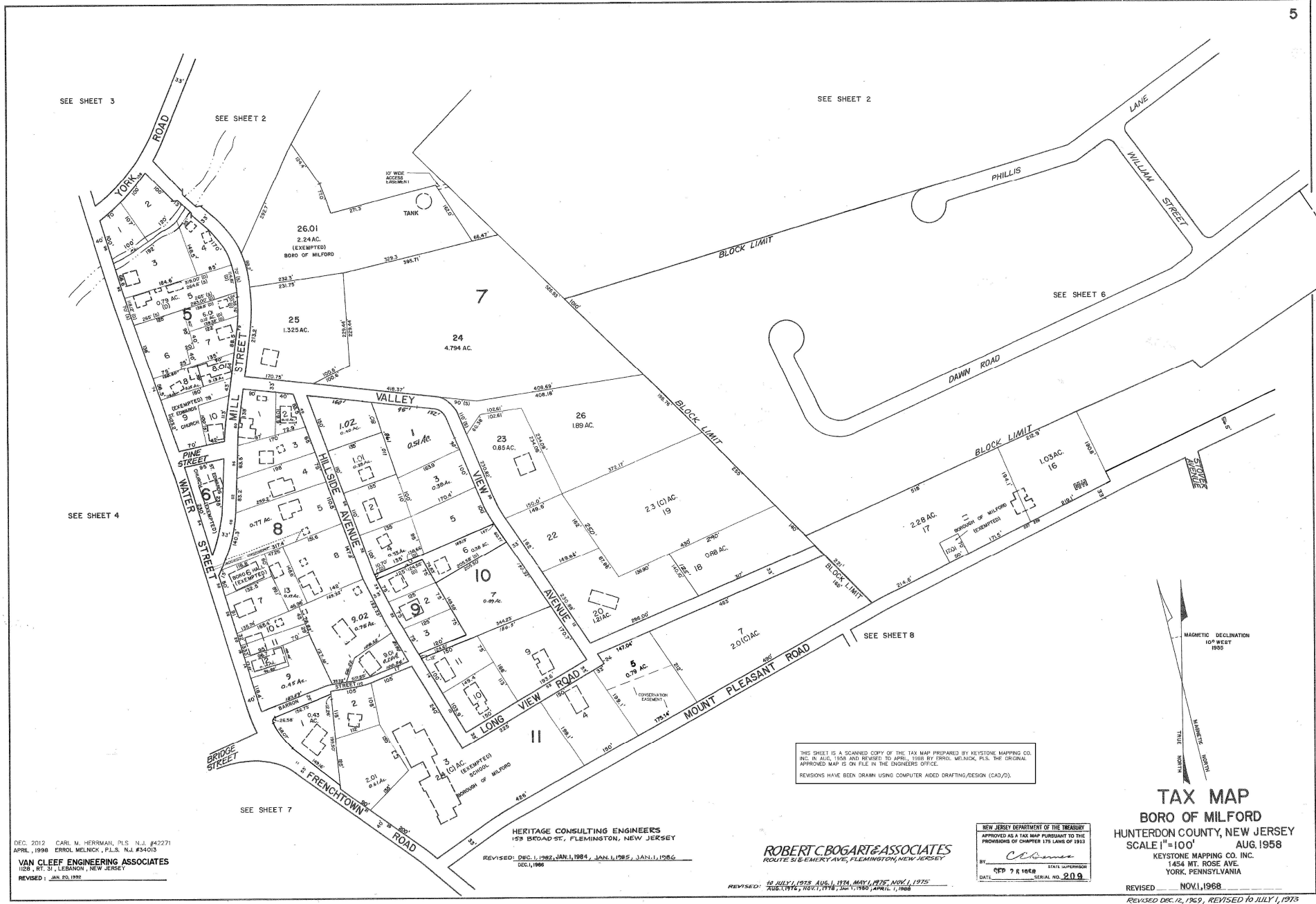
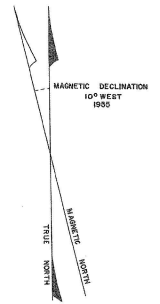
REVISED: 10 JULY 1978, AUG. 1, 1978, MAY 1, 1979, NOV. 1, 1979  
 AUG. 1978, 1981, 1978, JAN. 1, 1980, APRIL 1, 1988

THIS SHEET IS A SCANNED COPY OF THE TAX MAP PREPARED BY KEYSTONE MAPPING CO. INC. IN AUG. 1958 AND REVISED TO APRIL 1959 BY ERROL MELNICK, P.L.S. THE ORIGINAL APPROVED MAP IS ON FILE IN THE ENGINEERS OFFICE.  
 REVISIONS HAVE BEEN DRAWN USING COMPUTER AIDED DRAFTING/DESIGN (CAD/D).

NEW JERSEY DEPARTMENT OF THE TREASURY  
 APPROVED AS A TAX MAP PURSUANT TO THE PROVISIONS OF CHAPTER 175, LAWS OF 1953  
 BY: *Chabon*  
 DATE: SEP 7 8 1958 SERIAL NO. 209

**TAX MAP**  
 BORO OF MILFORD  
 HUNTERDON COUNTY, NEW JERSEY  
 SCALE 1"=100' AUG. 1958  
 KEYSTONE MAPPING CO. INC.  
 1454 MT. ROSE AVE.  
 YORK, PENNSYLVANIA

REVISED: NOV. 1, 1968  
 REVISED DEC. 12, 1969, REVISED TO JULY 1, 1973  
 TO SHOW CONDITIONS OF DEC. 2012



THIS SHEET IS A SCANNED COPY OF THE TAX MAP PREPARED BY KEYSTONE MAPPING CO. INC. IN AUG. 1958 AND REVISED TO APRIL, 1998 BY ERROL MELNICK, P.E. THE ORIGINAL APPROVED MAP IS ON FILE IN THE ENGINEERS OFFICE.  
REVISIONS HAVE BEEN DRAWN USING COMPUTER AIDED DRAFTING/DESIGN (CAD/D).

SEE SHEET 2

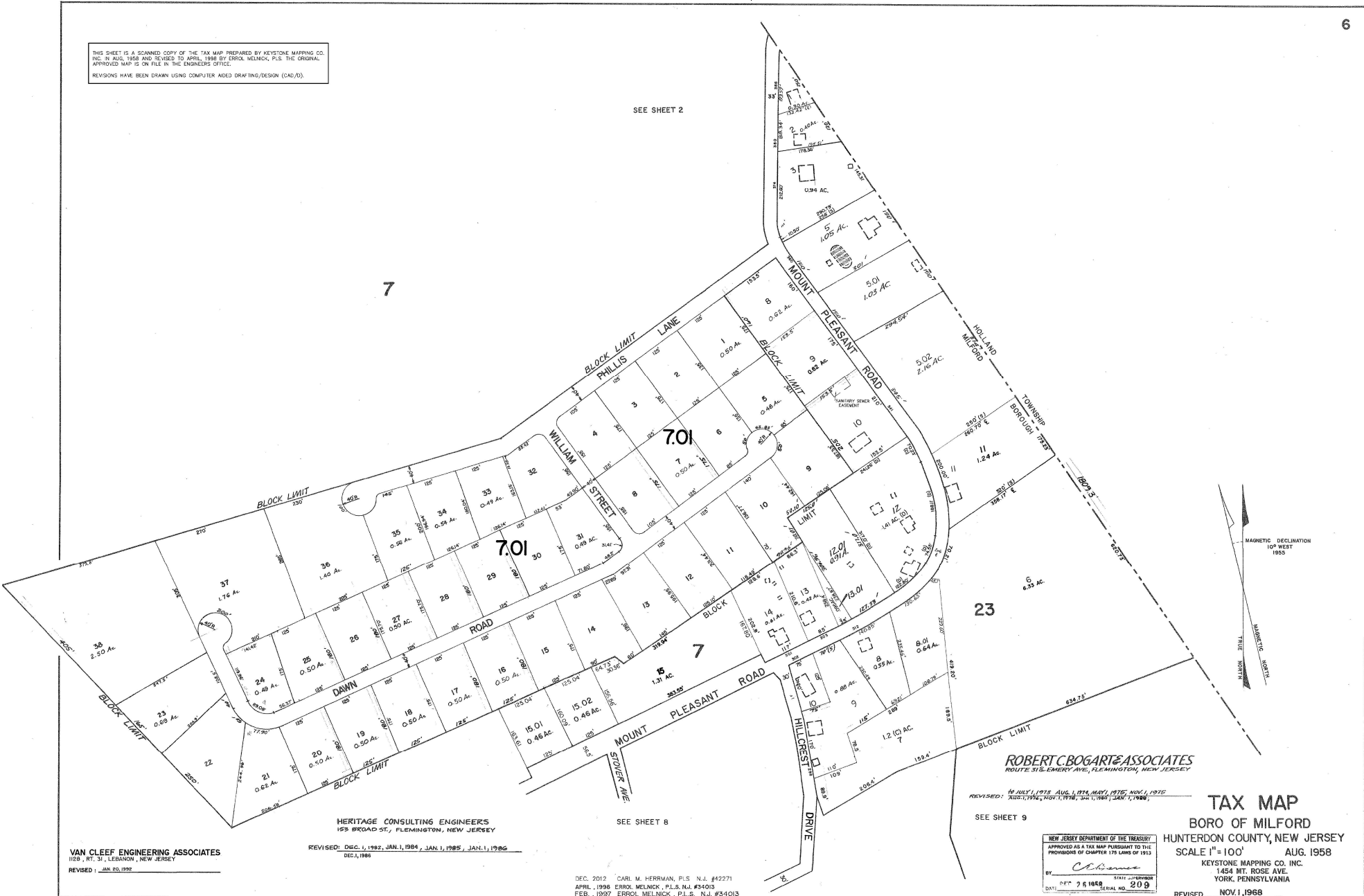
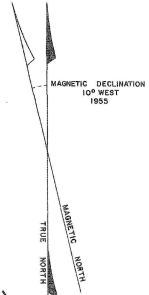
7

7.01

7.01

23

SEE SHEET 8



HERITAGE CONSULTING ENGINEERS  
159 BROAD ST., FLEMINGTON, NEW JERSEY

REVISED: DEC. 1, 1997, JAN. 1, 1984, JAN. 1, 1985, JAN. 1, 1986  
DEC. 1, 1988

VAN CLEEF ENGINEERING ASSOCIATES  
1128 - RT. 31, LEBANON, NEW JERSEY  
REVISED - JAN. 25, 1992

DEC. 2012 CARL M. HERRMAN, P.L.S. N.J. #42271  
APRIL, 1998 ERROL MELNICK, P.L.S. N.J. #34013  
FEB., 1997 ERROL MELNICK, P.L.S. N.J. #34013

ROBERT C. BOGARTE & ASSOCIATES  
ROUTE 31 & EMERY AVE., FLEMINGTON, NEW JERSEY

14 JULY, 1975 AUG. 1, 1974 MAY, 1975 NOV. 1, 1976  
REVISED: AUG. 1, 1954, NOV. 1, 1978, JAN. 1, 1987, JAN. 1, 1988

SEE SHEET 9

### TAX MAP

BORO OF MILFORD  
HUNTERDON COUNTY, NEW JERSEY  
SCALE 1" = 100' AUG. 1958

KEYSTONE MAPPING CO. INC.  
1454 MT. ROSE AVE.  
YORK, PENNSYLVANIA

REVISED NOV. 1, 1968

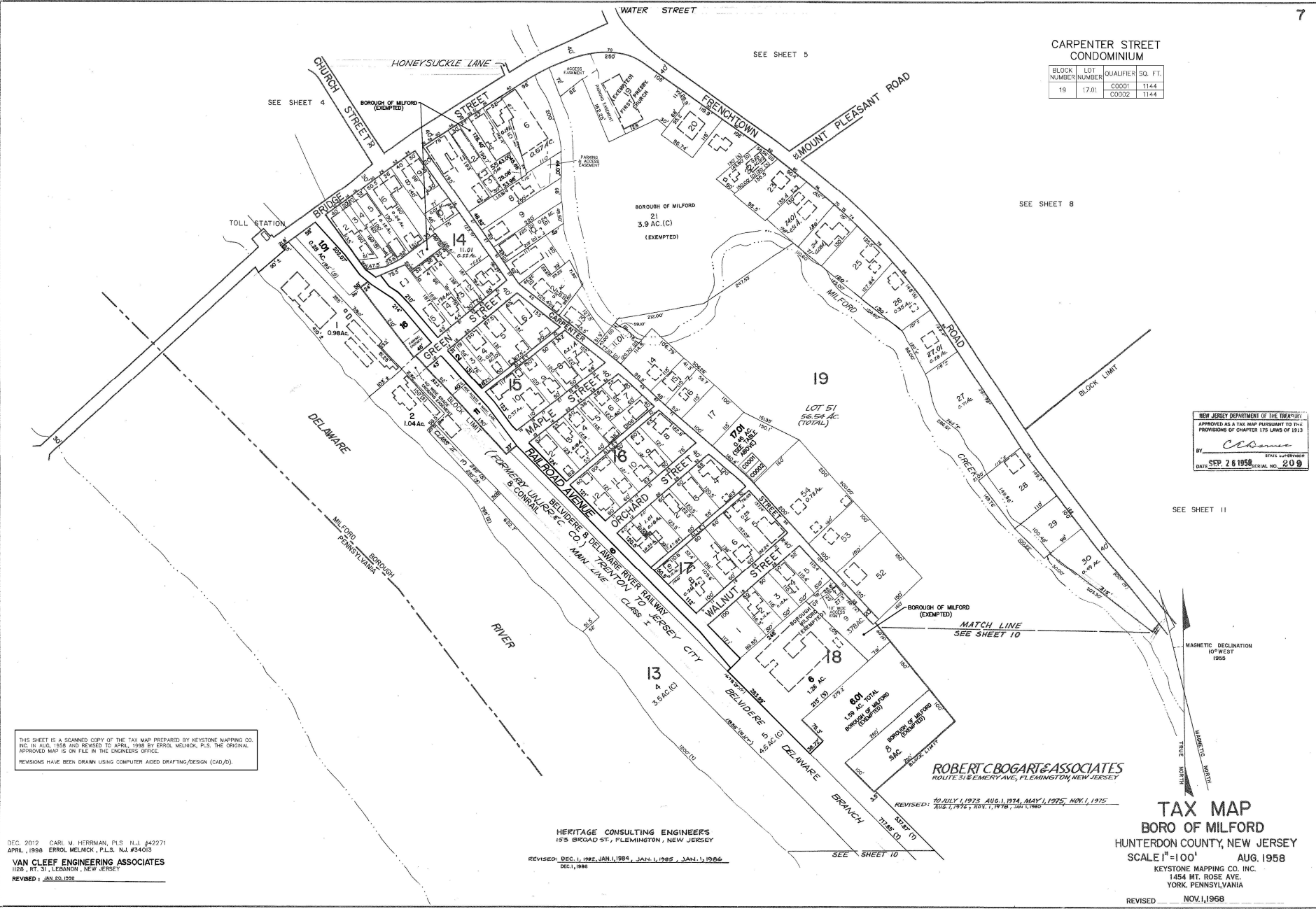
NEW JERSEY DEPARTMENT OF THE TREASURY  
APPROVED AS A TAX MAP PURSUANT TO THE  
PROVISIONS OF CHAPTER 175 LAWS OF 1913  
BY: *Robert C. Bogarte*  
DATE: OCT 7 5 1968 SERIAL NO. 209

REVISED TO DEC. 12, 1969, REVISED TO JULY 1, 1973  
TO SHOW CONDITIONS OF DEC. 2012

### CARPENTER STREET CONDOMINIUM

BLOCK NUMBER	LOT NUMBER	QUALIFIER	SQ. FT.
19	17.01	C0001	1144
		C0002	1144

NEW JERSEY DEPARTMENT OF THE TREASURY  
 APPROVED AS A TAX MAP PURSUANT TO THE  
 PROVISIONS OF CHAPTER 175 LAWS OF 1913  
 BY *Robert C. Bogart* STATE SUPERVISOR  
 DATE SEP. 26 1956 SERIAL NO. 209



THIS SHEET IS A SCANNED COPY OF THE TAX MAP PREPARED BY KEYSTONE MAPPING CO. INC. IN AUG. 1958 AND REVISED TO APRIL, 1998 BY ERROL MELNICK, P.L.S. THE ORIGINAL APPROVED MAP IS ON FILE IN THE ENGINEER'S OFFICE.  
 REVISIONS HAVE BEEN DRAWN USING COMPUTER AIDED DRAFTING/DESIGN (CAD/D).

DEC. 2012 CARL M. HERRMAN, P.L.S. N.J. #42271  
 APRIL, 1998 ERROL MELNICK, P.L.S. N.J. #34013  
**VAN CLEEF ENGINEERING ASSOCIATES**  
 1128 - RT. 31 - LEBANON, NEW JERSEY  
 REVISED: JAN. 20, 1998

**HERITAGE CONSULTING ENGINEERS**  
 155 BROAD ST., FLEMINGTON, NEW JERSEY  
 REVISED: DEC. 1, 1987, JAN. 1, 1984, JAN. 1, 1985, JAN. 1, 1986  
 DEC. 1, 1988

**ROBERT C. BOGART & ASSOCIATES**  
 ROUTE 51 & EMERY AVE., FLEMINGTON, NEW JERSEY  
 REVISED: 10 JULY, 1973, AUG. 1, 1974, MAY 1, 1975, NOV. 1, 1976  
 AUG. 1, 1974, 1975, 1976, 1977, 1978, 1979

**TAX MAP**  
**BORO OF MILFORD**  
 HUNTERDON COUNTY, NEW JERSEY  
 SCALE 1" = 100' AUG. 1958  
 KEYSTONE MAPPING CO. INC.  
 1454 MT. ROSE AVE.  
 YORK, PENNSYLVANIA  
 REVISED NOV. 1, 1968

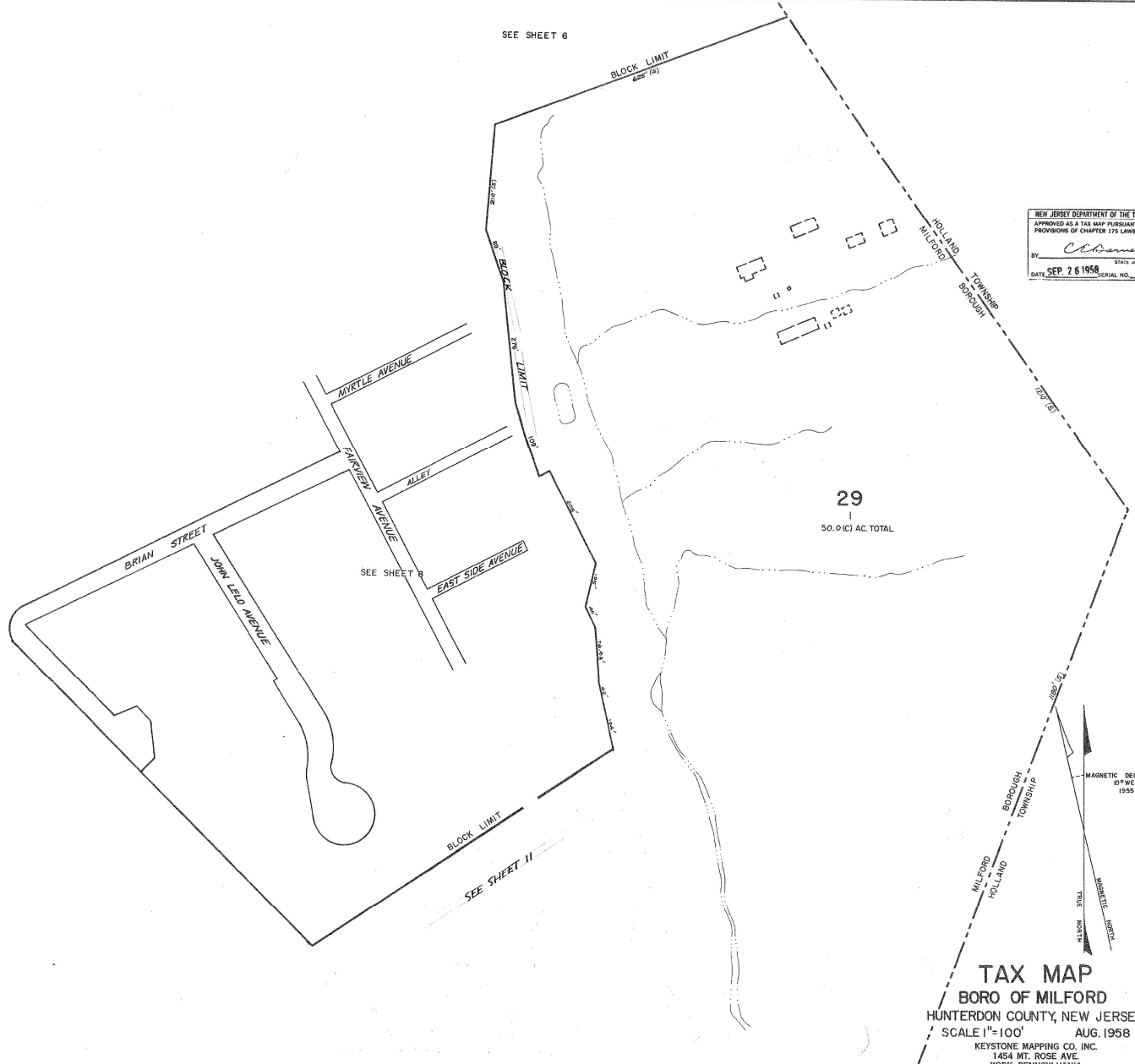
REVISED TO DEC. 12, 1969, REVISED TO JULY 1, 1973  
 TO SHOW CONDITIONS OF DEC. 2012





THIS SHEET IS A SCANNED COPY OF THE TAX MAP PREPARED BY KEYSTONE MAPPING CO. INC. IN AUG. 1958 AND REVISED TO APRIL, 1998 BY ERROL MELNICK, PLS. THE ORIGINAL APPROVED MAP IS ON FILE IN THE ENGINEER'S OFFICE.  
 REVISIONS HAVE BEEN DRAWN USING COMPUTER AIDED DRAFTING/DESIGN (CAD/2).

NEW JERSEY DEPARTMENT OF THE TREASURY  
 APPROVED AS A TAX MAP PURSUANT TO THE  
 PROVISIONS OF CHAPTER 175 LAWS OF 1913  
 BY: *Chasman*  
 STATE APPROVED  
 DATE: SEP. 26 1958 SERIAL NO. 209



HERITAGE CONSULTING ENGINEERS  
 153 BROAD ST., FLEMINGTON, NEW JERSEY

REVISED: DEC. 1, 1982, JAN. 1, 1984, JAN. 1, 1985, JAN. 1, 1986  
 DEC. 1, 1988

VAN CLEEF ENGINEERING ASSOCIATES  
 1528 RT. 31, LISBON, NEW JERSEY

REVISED: JAN. 23, 1938  
 DEC. 2012 CARL M. HERRMAN, PLS. N.J. #42271

ROBERT C. BOGART & ASSOCIATES  
 ROUTE 315 EMERY AVE., FLEMINGTON, NEW JERSEY

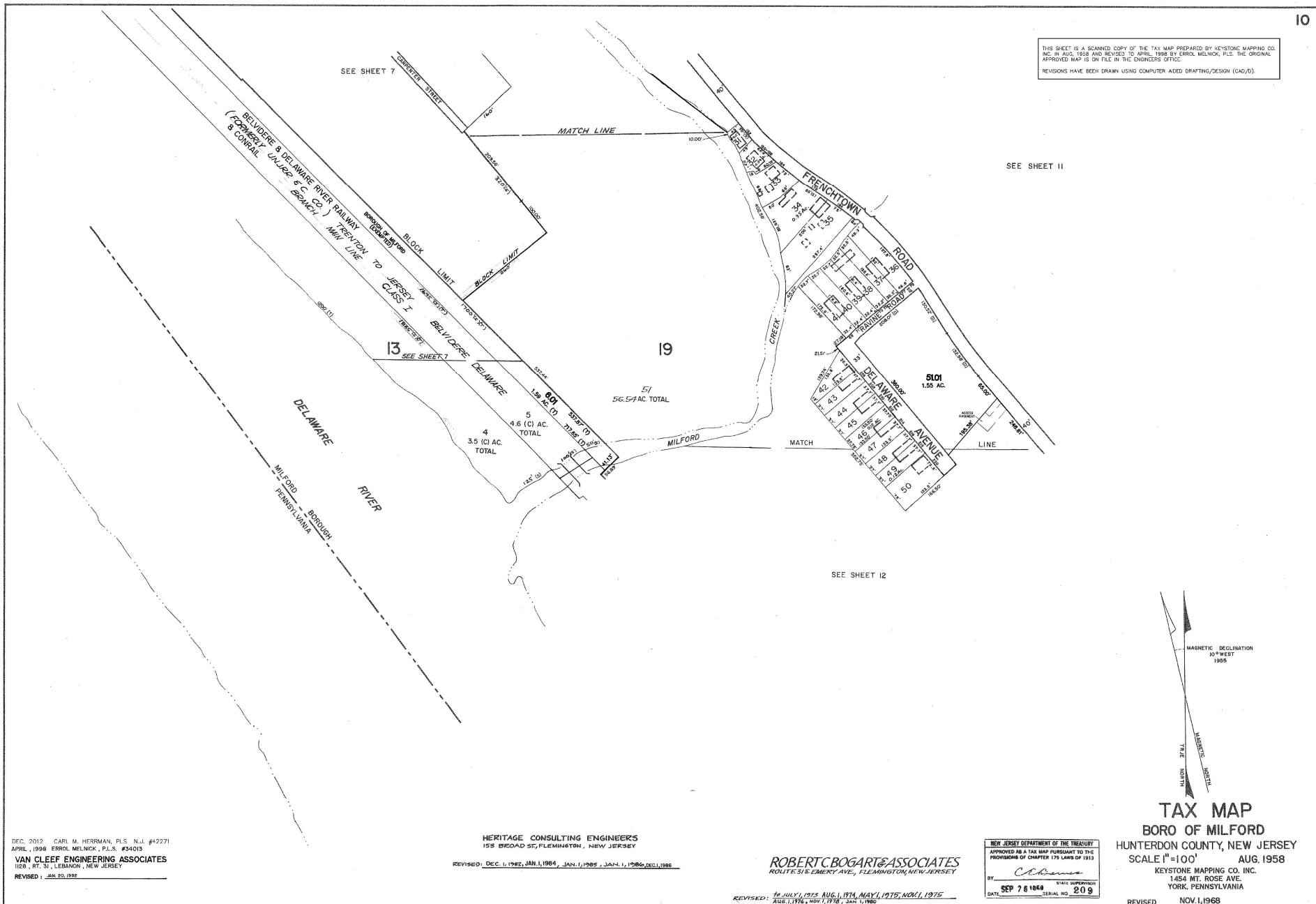
REVISED: 10 JULY 1, 1973, AUG. 1, 1974, MAY 1, 1975, NOV. 1, 1976  
 FEB. 1, 1976, NOV. 1, 1978, JAN. 1, 1980, 11/9/1998

TAX MAP  
 BORO OF MILFORD  
 HUNTERDON COUNTY, NEW JERSEY  
 SCALE 1"=100' AUG. 1958  
 KEYSTONE MAPPING CO. INC.  
 1454 MT. ROSE AVE.  
 YORK, PENNSYLVANIA

REVISED NOV. 1, 1968

REVISED TO DEC. 12, 1969, REVISED TO JULY, 1973  
 TO SHOW CONDITIONS OF DEC. 2012

THIS SHEET IS A SCANNED COPY OF THE TAX MAP PREPARED BY KEYSTONE MAPPING CO. INC. IN AUG. 1958 AND REVISED TO APRIL, 1988 BY ERROL MELNICK, P.L.S. THE ORIGINAL APPROVED MAP IS ON FILE IN THE ENGINEERS OFFICE.  
REVISIONS HAVE BEEN DRAWN USING COMPUTER AIDED DRAFTING/DESIGN (CAD/D).



DEC. 2012 CARL M. HERRMAN, P.L.S. N.J. #42271  
APRIL, 1998 ERROL MELNICK, P.L.S. #34013  
VAN CLEEF ENGINEERING ASSOCIATES  
1128 RT. 51, LISIACON, NEW JERSEY  
REVISED: JAN. 20, 1992

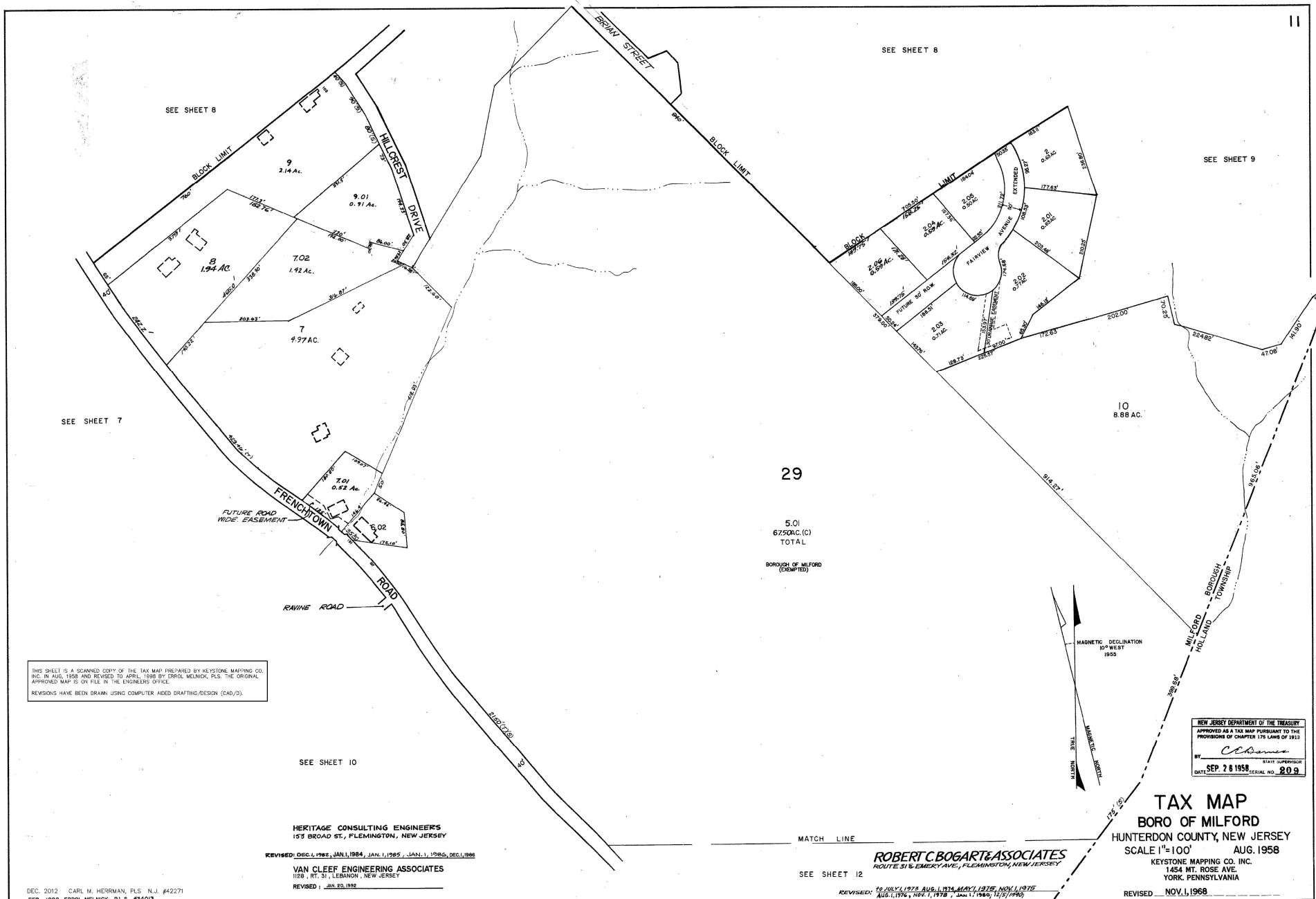
HERITAGE CONSULTING ENGINEERS  
159 BROAD ST, FLEMINGTON, NEW JERSEY  
REVISED: DEC. 1, 1982, JAN. 1, 1984, JAN. 1, 1985, JAN. 1, 1986, DEC. 1, 1988

ROBERT C. BOGART & ASSOCIATES  
ROUTE 315 EMERY AVE., FLEMINGTON, NEW JERSEY  
REVISED: TO JULY, 1973, AUG. 1, 1974, MAY 1, 1975, NOV. 1, 1975  
AUG. 1, 1976, NOV. 1, 1978, JAN. 1, 1980

NEW JERSEY DEPARTMENT OF THE TREASURY  
APPROVED AS A TAX MAP PURSUANT TO THE PROVISIONS OF CHAPTER 175 LAWS OF 1913  
BY: *Chen* STATE SUPERVISOR  
DATE: SEP 7 8 1988 SERIAL NO. 209

TAX MAP  
BORO OF MILFORD  
HUNTERDON COUNTY, NEW JERSEY  
SCALE 1"=100' AUG. 1958  
KEYSTONE MAPPING CO. INC.  
1454 MT. ROSE AVE.  
YORK, PENNSYLVANIA  
REVISED NOV. 1, 1968

REVISED DEC. 12, 1969, REVISED TO JULY 1, 1975 TO SHOW CONDITIONS OF DEC. 2012



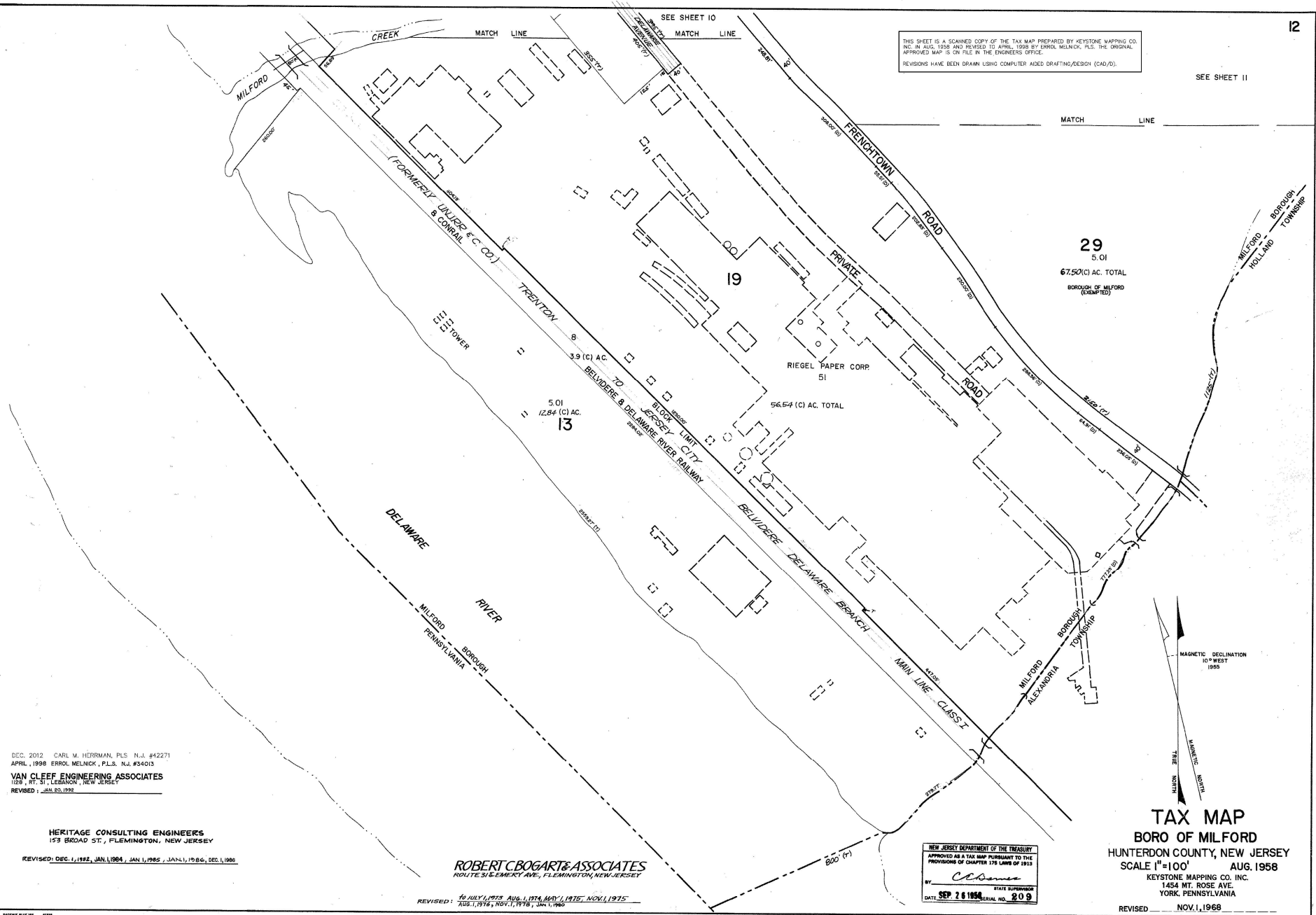
THIS SHEET IS A SCANNED COPY OF THE TAX MAP PREPARED BY KEYSTONE MAPPING CO. INC. IN AUG. 1958 AND REVISED TO APRIL, 1998 BY ERROL MELNICK, P.L.S. THE ORIGINAL APPROVED MAP IS ON FILE IN THE ENGINEER'S OFFICE.  
REVISIONS HAVE BEEN DRAWN USING COMPUTER AIDED DRAFTING/DESIGN (CAD/D).

SEE SHEET 11

29  
5.01  
67.50(C) AC. TOTAL  
BOROUGH OF MILFORD  
(EXEMPTED)

19  
RIEDEL PAPER CORP  
SI  
56.64 (C) AC. TOTAL

13  
5.01  
12.84 (C) AC.



DEC. 2012 CARL M. HERRMAN, P.L.S. N.J. #42271  
APRIL, 1998 ERROL MELNICK, P.L.S. N.J. #34013  
VAN CLEEF ENGINEERING ASSOCIATES  
1129 N. ST. LEONARD, NEW JERSEY  
REVISED: JAN. 30, 1992

HERITAGE CONSULTING ENGINEERS  
153 BROAD ST., FLEMINGTON, NEW JERSEY

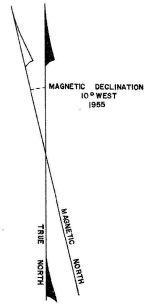
REVISED: DEC. 1, 1982, JAN. 1, 1984, JAN. 1, 1985, JAN. 1, 1986, DEC. 1, 1988

ROBERT C. BOGART & ASSOCIATES  
ROUTE 31 & EMERY AVE., FLEMINGTON, NEW JERSEY

REVISED: 10 JULY, 1978, AUG. 1, 1974, MAY 1, 1975, NOV. 1, 1975  
AUG. 1, 1976, NOV. 1, 1978, JAN. 1, 1980

NEW JERSEY DEPARTMENT OF THE TREASURY  
APPROVED AS A TAX MAP PURSUANT TO THE  
PROVISIONS OF CHAPTER 176 LAWS OF 1913  
BY *Clasme*  
STATE SUPERVISOR  
DATE: SEP. 24 1958 SERIAL NO. 209

TAX MAP  
BORO OF MILFORD  
HUNTERDON COUNTY, NEW JERSEY  
SCALE 1"=100' AUG. 1958  
KEYSTONE MAPPING CO. INC.  
1454 MT. ROSE AVE.  
YORK, PENNSYLVANIA  
REVISED NOV. 1, 1968



REVISED TO DEC. 12, 1968, REVISED TO JULY 1, 1973  
TO SHOW CONDITIONS OF DEC. 2012